

#2293280 in Books Linns Stamp News 1992Original language:English 11.00 x 8.50 x .50l, #File Name:

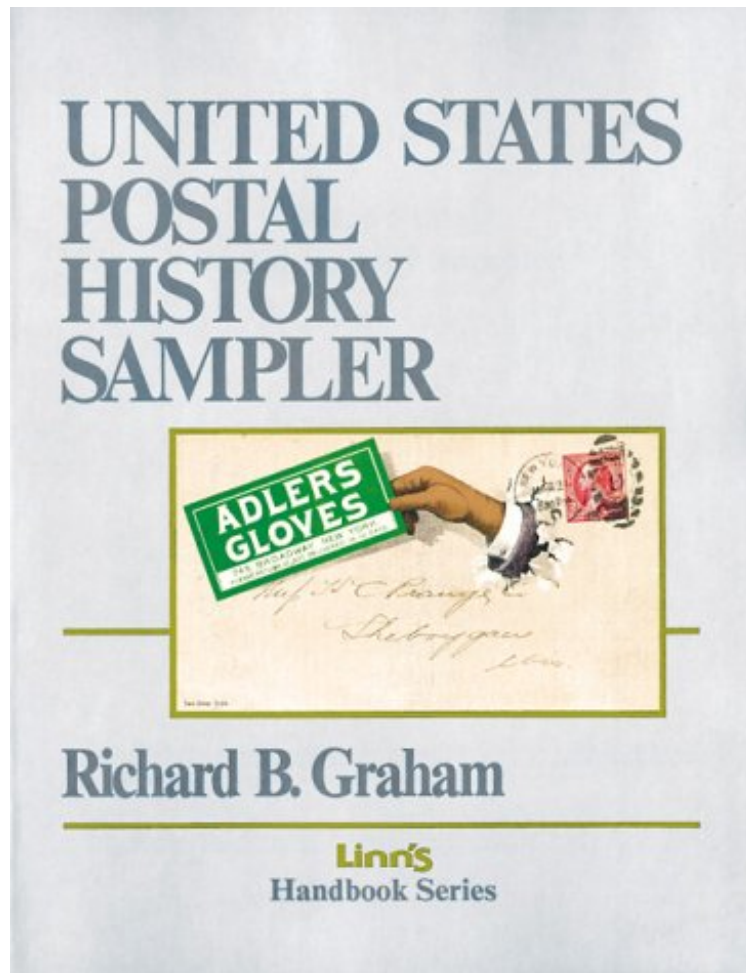
0940403307192 pages | File size: 53.Mb

DOWNLOAD 

Book online 

*Richard B. Graham*

*ePub / \*DOC / audiobook / ebooks / Download PDF*



[Ebook free] United States Postal History Sampler (Linn's handbook series)

## **United States Postal History Sampler (Linn's handbook series)**

**Richard B. Graham : United States Postal History Sampler (Linn's handbook series)** before purchasing it in order to gage whether or not it would be worth my time, and all praised United States Postal History Sampler (Linn's handbook series):

The book is an introduction to many different U.S. postal history topics. It consists of 15 chapters based on approximately 60 Linn's columns created by Graham between 1982 and 1991. Corrections and updates published in subsequent Linn's columns have been incorporated into the text where appropriate. Some of the topics covered include train wreck covers, fancy cancels APO markings, campaign covers, flag cancels, InteleX markings, Dead Letter Office markings, early railroad markings, factured first-day covers, free franks, advertising covers and Navy ship post office markings.

From the Back Cover  
INSIDE FLAP:  
About the Author  
Richard B. Graham is the dean of United States postal historians. Over the last four decades, his writing has appeared in a wide range of stamp journals and publications, and his behind-the-scenes editorial hand has shaped many excellent and important books. The quantity of Graham's output on postal history subjects is simply staggering. A retired engineer, Graham established his reputation for dispassionate research and accessible prose in the pages of such scholarly publications as *The Confederate Philatelist* and the *Chronicle of the U.S. Philatelic Classics Society*. To the stamp collecting community, he is best known as the author of the weekly Postal History column in *Linn's Stamp News*. Begun in 1982, this column has appeared in every issue of *Linn's* since then.